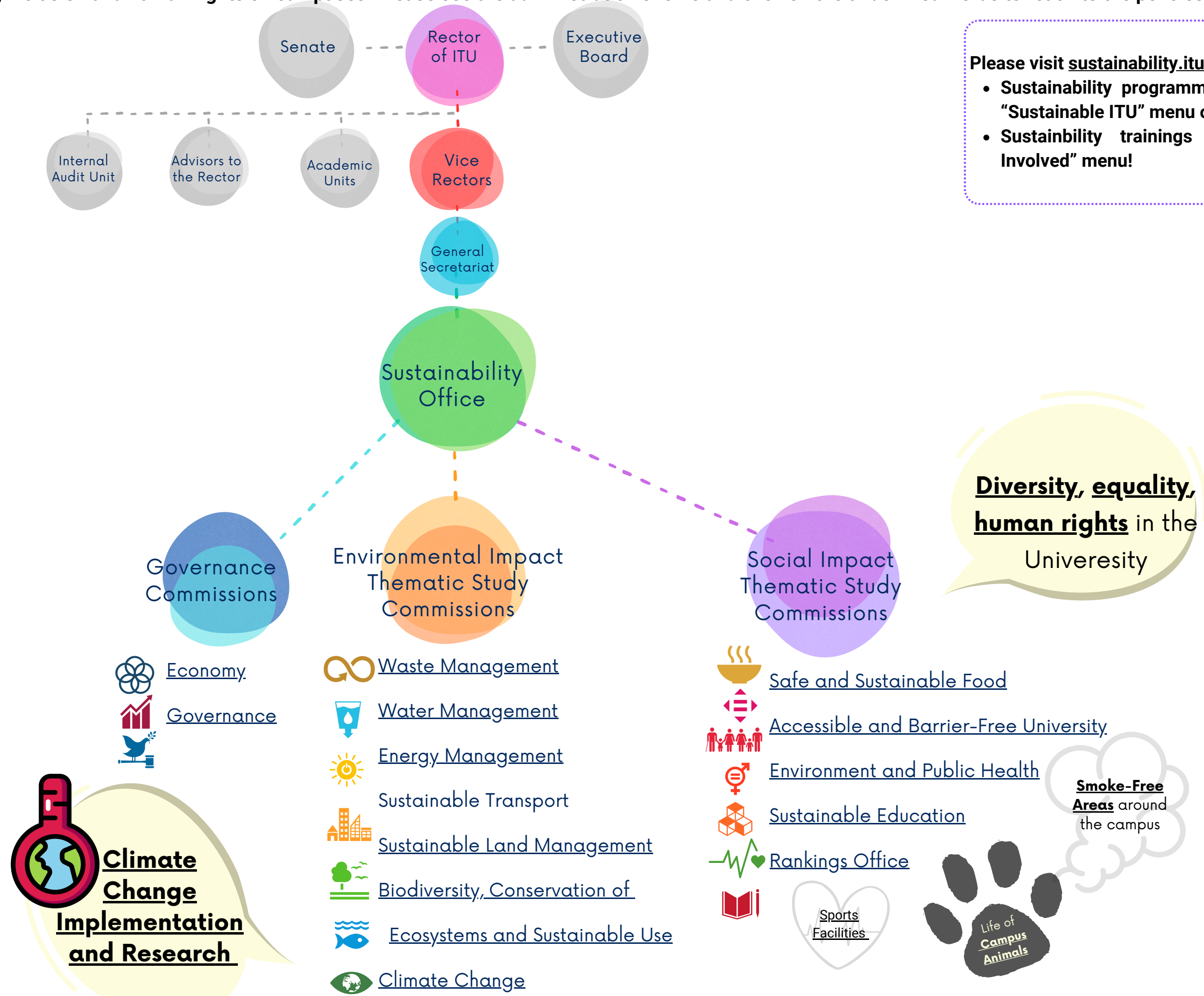


ITU has diversity and equality committees with a sustainability office tasked by the governing body to advise on and implement policies, programmes, and trainings related to diversity, equity, inclusion and human rights on campuses. Please see the administration sheme and click on the underlined words to reach to the policies.



Please visit sustainability.itu.edu.tr for more information.

- Sustainability programmes of ITU is detailed under “Sustainable ITU” menu of our website.
- Sustainability trainings are available under “Get Involved” menu!